



# INDOFINE Chemical Company, Inc.

121 Stryker Lane, Bldg. 30, Suite 1 • Hillsborough, NJ 08844 • U.S.A.

Phone: (908) 359-6778 • FAX: (908) 359-1179

website: [www.indofinechemical.com](http://www.indofinechemical.com)

e-mail: [chemical@indofinechemical.com](mailto:chemical@indofinechemical.com)

## CERTIFICATE OF ANALYSIS

Catalog Number: 06-307

Product Name: **BERBERINE SULFATE**

CAS Number: [633-66-9]

Chemical Formula: C<sub>20</sub>H<sub>20</sub>NO<sub>8</sub>S

Molecular Weight: 434.43

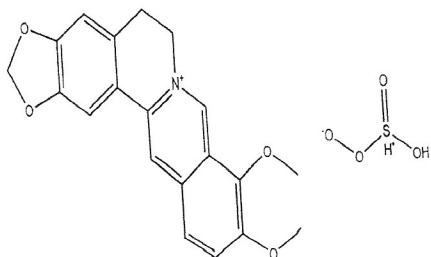
Lot Number: 2103529

Appearance: Yellow powder

Loss on drying: 1.59%

Storage: Store in a cool, dry, and dark place

Purity(HPLC): 98.04%



Prepared by:  
Ramesh Mandadi  
Ramesh Mandadi  
Director of Operations

Reviewed and Approved by:  
Sujata Moton  
Sujata Moton  
VP



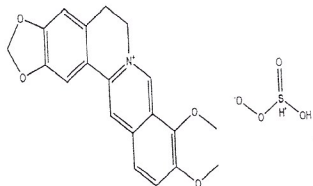
# INDOFINE Chemical Company, Inc.

121 Stryker Lane, Bldg. 30, Suite 1 • Hillsborough, NJ 08844 • U.S.A.

Phone: (908) 359-6778 • FAX: (908) 359-1179

website: [www.indofinechemical.com](http://www.indofinechemical.com)

e-mail: [chemical@indofinechemical.com](mailto:chemical@indofinechemical.com)



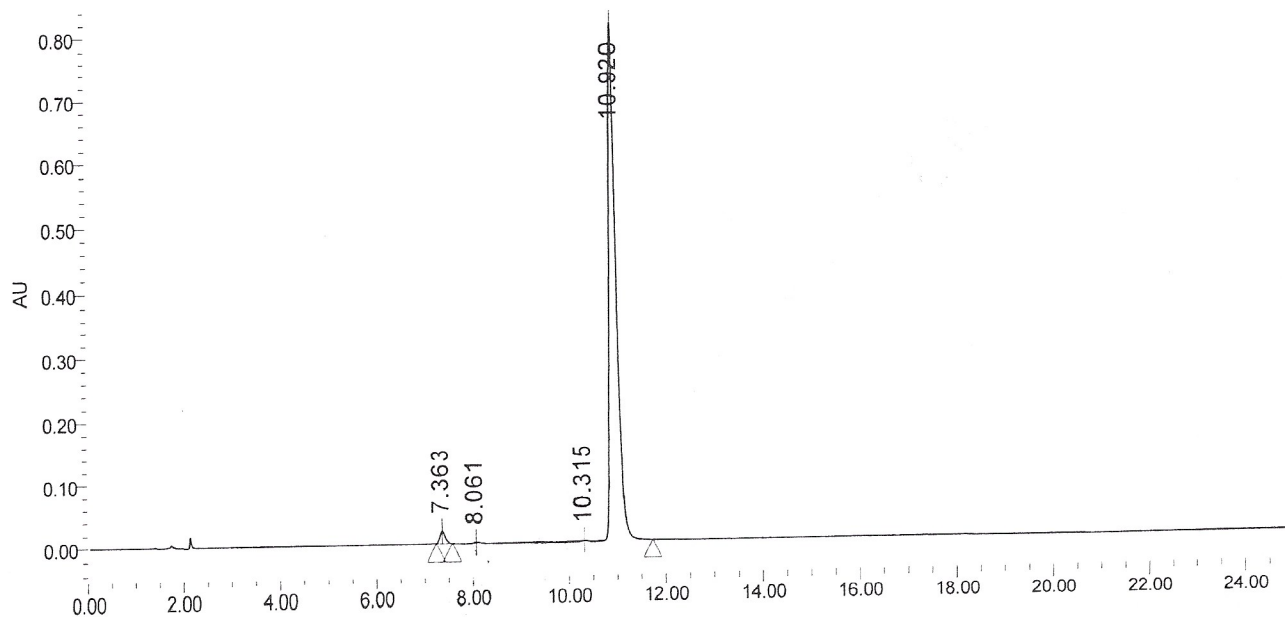
## HPLC ANALYSIS

Catalog No.: 06-307  
 Product Name: Berberine sulfate  
 Lot No.: 2103529

### SAMPLE INFORMATION

Sample Name:	Berberine sulfate	Acquired By:	PRF01
Sample Type:		Sample Set Name	
Vial:	6	Acq. Method Set:	Berberine sulfate
Injection #:	1	Processing Method	sample
Injection Volume:	10.00 ul		
Run Time:	25.0 Minutes		

Auto-Scaled Chromatogram



peak Results

	RT	Area	% Area	Height	USP Plates	USP Resolution
1	7.363	148214	1.77	19534	21573.21	
2	8.061	9608	0.11	1309	25856.17	3.43
3	10.315	6518	0.08	1030	37452.52	11.67
4	10.920	8211584	98.04	814516	26837.47	2.79